

## 1 Introduction

### 1.1 Overview

The Remote Auxiliary Battery Pack enclosure, (*figure 1*), places the Bin-Sense™ Remote unit batteries at ground level offering a safe, time saving alternative to climbing bins. Batteries can now be replaced quickly and conveniently while your feet remain firmly planted on the ground. Issues related to opening a Remote unit are also greatly reduced. Once the installation point has been chosen, as detailed below, adequately secure parts and equipment to avoid damage to equipment and personal injury.

After reading this installation you will be able to successfully add the Remote Auxiliary Battery enclosure to your Bin-Sense system. Incorrect installation will cause a loss of power to the remote and negatively impact the ability of the Remote unit to monitor grain.

### 1.2 Required Parts

- ✓ Batteries
- ✓ Mounting Hardware
- ✓ Remote Unit Power Cable
- ✓ Link Cable Drop (\*separate order)



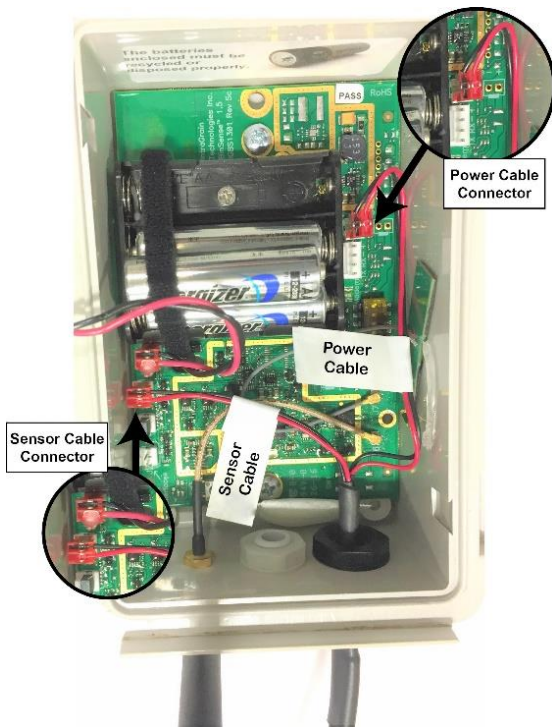
Figure 1 - Remote Auxiliary Battery Pack, mounting hardware and Link



**CAUTION:** Use extreme care and caution when climbing a bin, follow all approved safety procedures for ladders. When working above 1.2 metres, wear a safety harness and personal protective equipment. An approved tool belt must be worn to keep both hands free when climbing up and down a ladder.

## 2.0 Installation Steps

1. If applicable, install the Remote unit using the separate *Quick Start Guide* or *Adding New Remotes* instructions.
2. Unplug the Remote from its link cable.
3. **IMPORTANT NOTE:** Remove Batteries from Remote unit or power failure will result. Dispose of batteries in accordance with applicable laws and regulations.

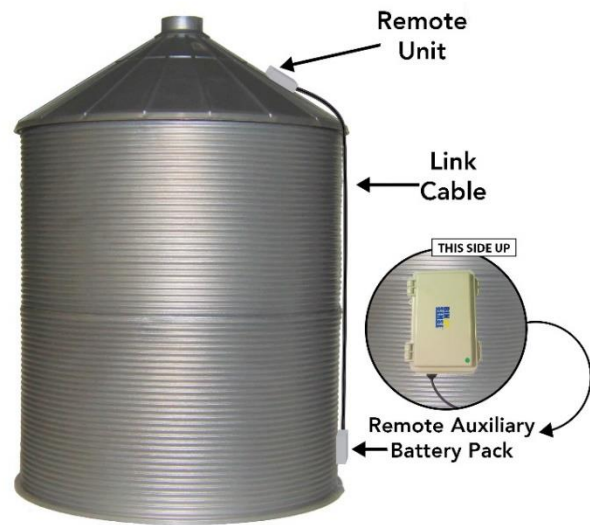


4. Remove the Remote unit's sensor cable by unplugging the red connector from pin J1 on the circuit board. Then, using 15mm wrench, loosen the outside seal gasket from the grommet.
5. Now use  $\frac{3}{4}$ " wrench to remove the inside grommet.
6. Remove the plastic nut from the supplied Remote Auxiliary Battery Link Cable and carry into enclosure.
7. Attach the 2 pin red connectors labeled "Sensor Cable" to J1 at top centre on circuit board then the "Power Cable" to J13 on the bottom right of the circuit board. Secure using hot glue. See *Figure 2*.

Figure 2 - Circuit Board Power Cable & Sensor Cable Connections

8. Connect the Auxiliary Power Cable to the long Link Cable purchased separately and position so the Remote unit with cable end pointing downslope towards the ground.
9. Attach the Remote Auxiliary Power pack to bin using the provided mounting hardware. See *Figure 3*.
10. Insert the included new batteries into the Auxiliary Power Pack.

**Note: Once installed send a scan command from the Master unit to make sure it re-connects to the Remote unit.**



*Figure 3 - Remote Auxiliary Battery Pack  
Bin Installation*